

MANUAL LEVER MONITOR Mod. FI-MM3 BZ



DESCRIPTION

The FI-MM3 BZ UL listed monitor is a manual lever controlled monitor designed for fixed installation and for mobile mounted units. FI-MM3 BZ is a cast monitor and, thanks to the high quality materials used in its composition, it is commonly installed in petrochemical, heavy industrial, marine and high corrosive environments.

The monitor has cast nickel aluminum bronze 3 inch water way, with a maximum UL listed flowrate of 1000 GPM. Both vertical and horizontal movements are controlled by a handle, and the standby setting can be fixed using the locking knobs.

FI-MM3 BZ is UL Listed with FI-BA BZ Nozzle (without pickup tube) and FI-ABA BZ Nozzle (with pickup tube).

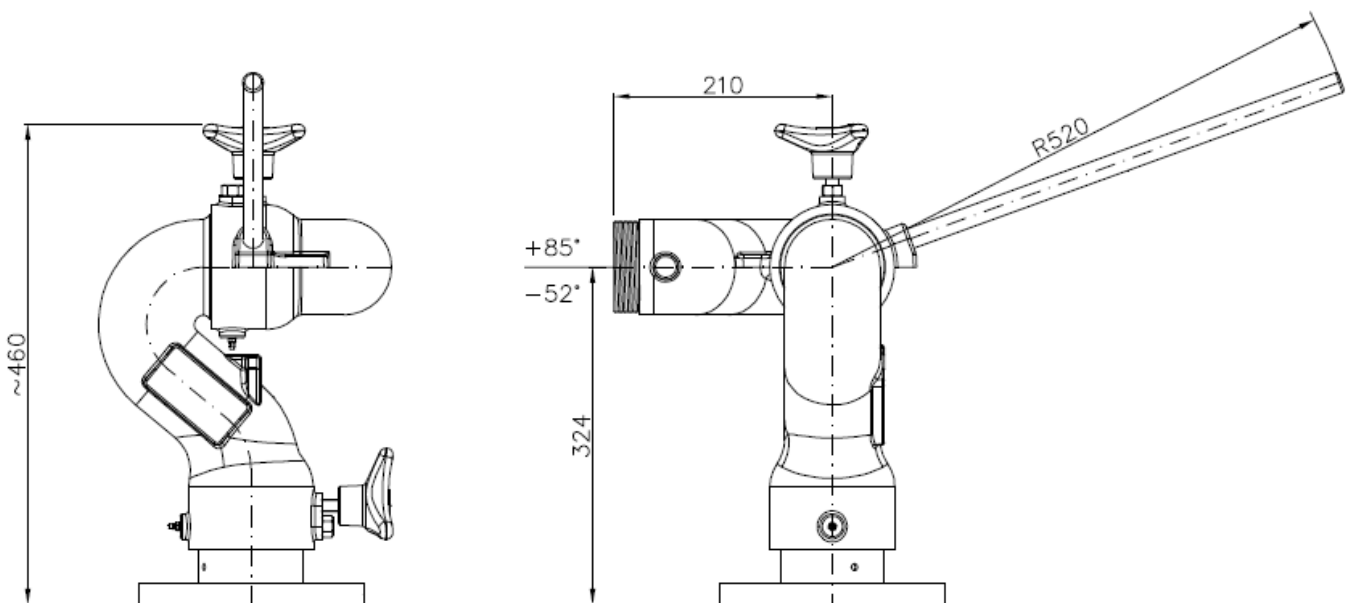
The monitor/nozzle combination is UL Listed as part of a fire extinguishing system with specific foam concentrates. Listed system components can be found at <https://iq.ulprospector.com>.

UL Listed GFXX.EX29259 – Foam Monitors.

The monitor is fluorine free compatible.

Technical characteristics	
Model	FI-MM3 BZ
Body material	Nickel aluminum bronze
Approvals	UL listed, fluorine free compatible
UL listed flowrates	250, 350, 500, 750 or 1,000 GPM (Please refer to UL Product IQ for actual Listing details)
Max. working pressure	175 PSI
Inlet connection	Flanged ANSI or UNI PN 16
Outlet connection	3" threaded bsp m
Weight	18 kg
Travel	Rotation: 360° continuous Elevation: + 85° - 52°
Joints	Mounted on double ring of spheres with greaser. Vertical and horizontal stand-by setting can be fixed via the locking knobs.
Paint cycle	Epoxi primer and polyurethanic enamel color red RAL 3000. Natural finish for nozzle.

DIMENSIONS

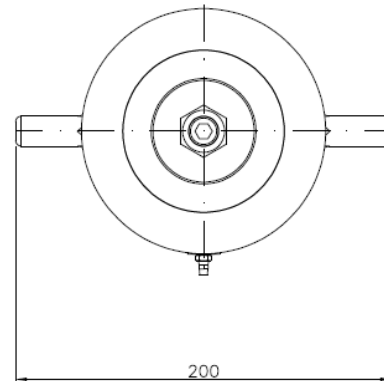
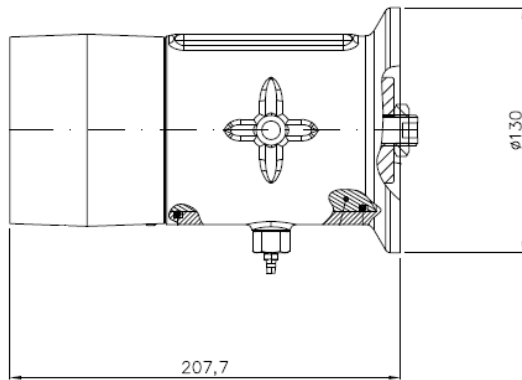


NOZZLE SELECTION

FI-BA BZ: Non-self-inducting nozzle is for use with water or with foam solution supplied via a suitable bladder tank or other foam mixing systems.

FI-ABA BZ: Self-inducting nozzle equipped with pick-up tube in order to use the flow of water through the internal waterway to aspirate the foam from a foam container and mix it into a foam solution. Mixing is carried out at 3%. The foam induction can be stopped using the supplied ball valve in order to discharge water only.

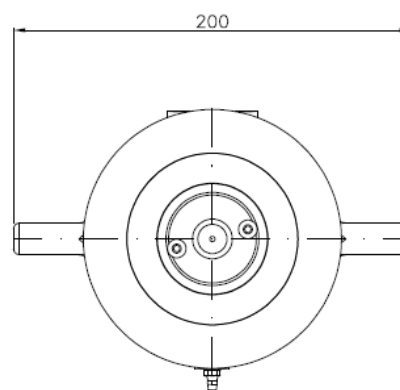
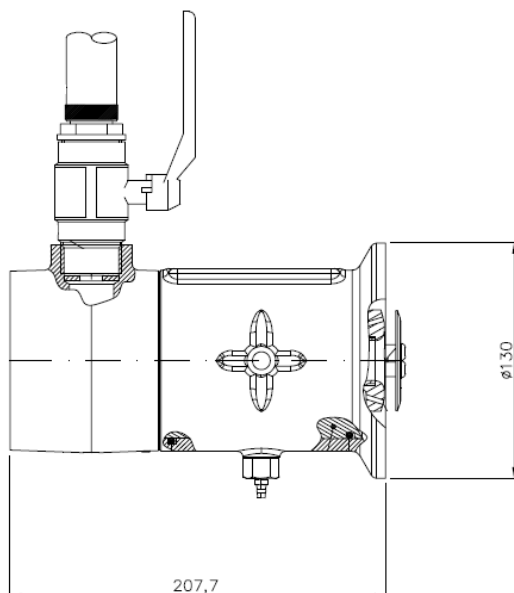
FI-BA BZ DIMENSIONS



Performance data & technical characteristics

Model	Material	Weight KG	Flowrate GPM	Monitor inlet pressure PSI
FI-BA BZ 250	Nickel aluminum bronze	7	250	100
FI-BA BZ 350	Nickel aluminum bronze	7	350	100
FI-BA BZ 500	Nickel aluminum bronze	7	500	100
FI-BA BZ 750	Nickel aluminum bronze	7	750	100
FI-BA BZ 1000	Nickel aluminum bronze	7	845-1000	100-145

FI-ABA BZ DIMENSIONS



Performance data & technical characteristics

Model	Material	Weight KG	Flowrate GPM	Monitor inlet pressure PSI	Induction
FI-ABA BZ 250	Nickel aluminum bronze	8	250	100	3%
FI-ABA BZ 350	Nickel aluminum bronze	8	350	100	3%
FI-ABA BZ 500	Nickel aluminum bronze	8	500	100	3%
FI-ABA BZ 750	Nickel aluminum bronze	8	750	100	3%
FI-ABA BZ 1000	Nickel aluminum bronze	8	845-1000	100-145	3%